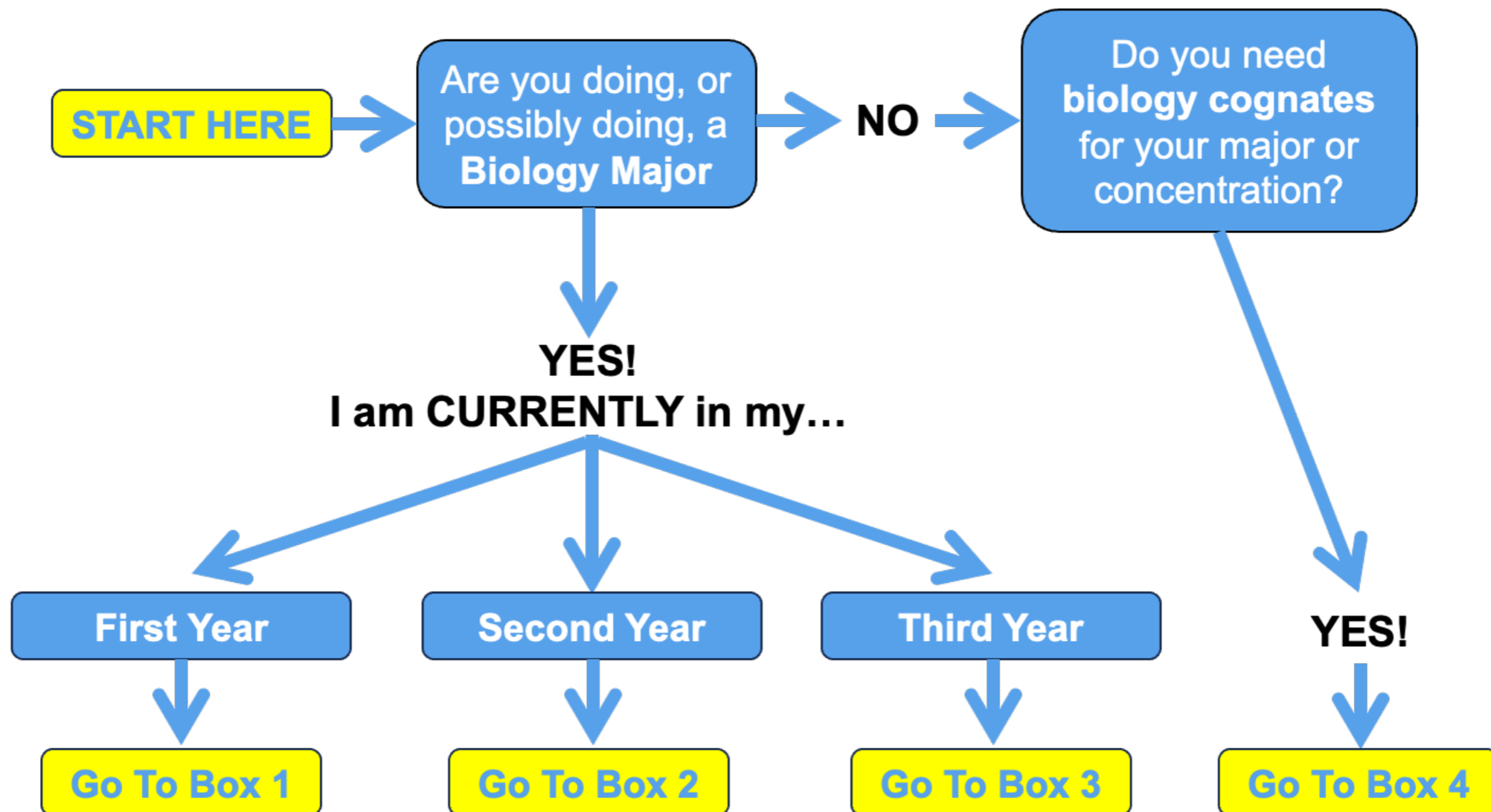


The Bio Dept. is remodeling its course offerings!

Fall registration edition

Please use this handout to chart your path forward



A few REALLY IMPORTANT notes...

BIOL224 (Ecology & Conservation) and BIOL246 (Cell & Molecular Biology) are both being offered in the fall for the last time ever... they WILL NOT be offered again, so take them now !

The Bio Dept. supports study abroad for majors. The suggested courses shown here assume study abroad sometime in the junior year, and we are also committed to working with individual students who wish to study abroad at other times. Contact a Biology professor if you have questions.

Box 1

I am a first-year, possibly doing a Biology major.
By the end of spring 2024, I will have taken...

BIOL112

Ev Gen

take BIOL246 in fall '24 and CLIM BIO in spring '25

BIOL123

F n F

take BIOL224 in fall '24, then BIOL201 in winter '25

BOTH

Ev Gen + F n F

take either BIOL224 or BIOL246 in fall '24 (and a BIOL2XX elective in spring '25)

NEITHER

take BIOL101 in fall '24

ALL first-years intending to be a Biology major will be asked to switch to the 2025-2026 catalog during Declaration of Major day

Box 2

I am a sophomore, doing a Biology major.

Below, find the column that matches the courses you will have completed by the end of spring 2024...

I will have taken...

BIOL112 (Ev Gen)	X	X	X	X	X	
BIOL123 (F n F)	X	X	X	X		X
BIOL224 (Eco Con)	X			X		X
BIOL246 (Cell Molec)		X		X	X	

↓ ↓ ↓ ↓ ↓ ↓
**see instructions for
group number ...** **1** **2** **3** **4** **5** **6**

If you will have completed only one Biology course by the end of spring 2024, or if your combination of courses is not shown, please contact Santiago Salinas - he will help you figure out a plan

Box 2 (cont'd)

Instructions for ...

GROUP 1

112, 123, 224

take BIOL246 in
fall '24
(last chance; it'll
never be offered
again!)

GROUP 2

112, 123, 246

take BIOL224 in
fall '24
(last chance; it'll
never be offered
again!)

GROUP 3

112, 123

take BIOL246 in fall
'24 and CLIM BIO in
spring '25

GROUP 4

112, 123, 224, 246

study abroad! take
cognates! explore!

GROUP 5

112, 246

take BIOL224 in fall
(if abroad in fall, take
a BIOL2XX elective in
jr. spring)

GROUP 6

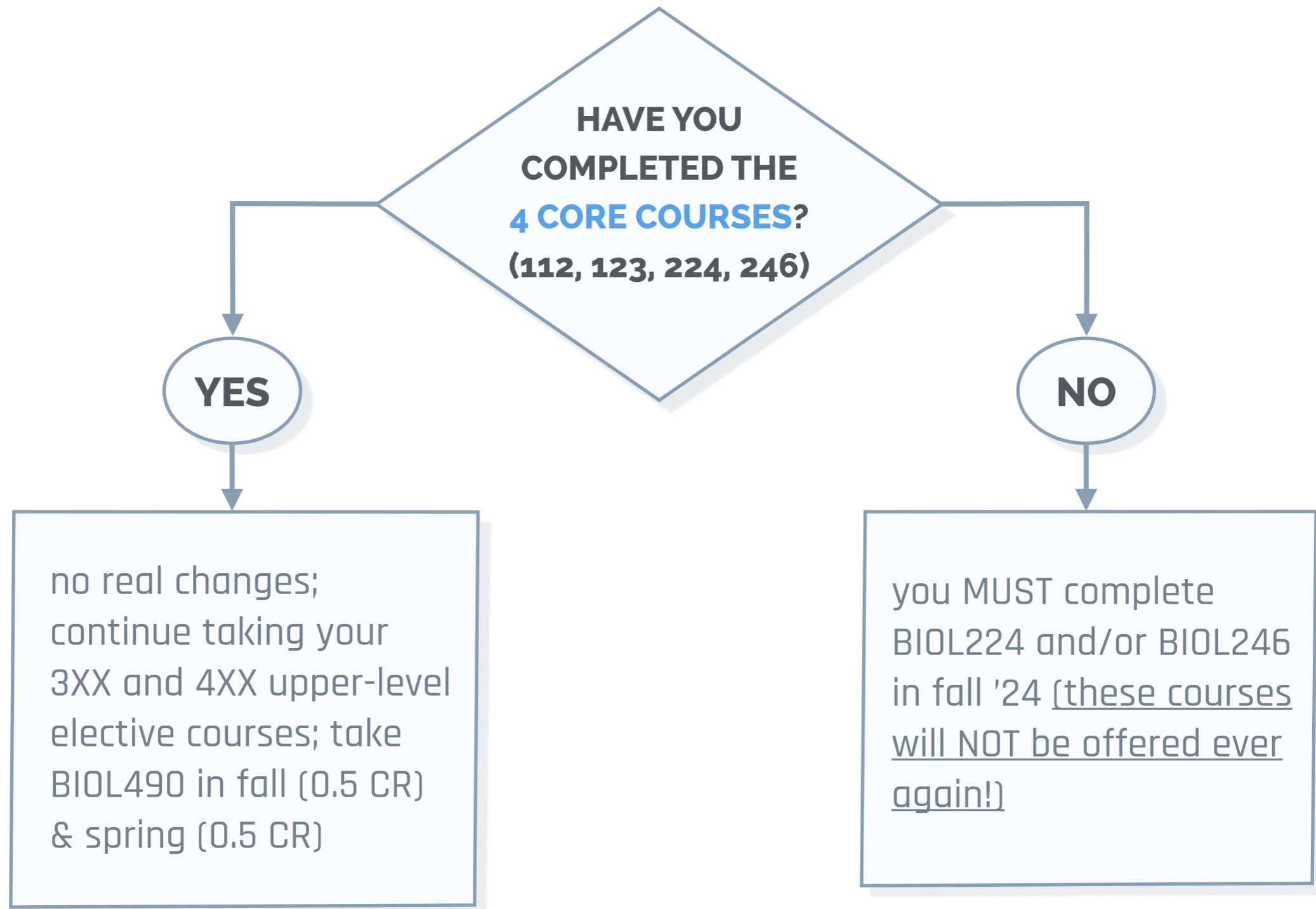
123, 224

take BIOL201 in jr. winter (will
substitute for BIOL112); take a
BIOL2XX elective in jr. spring
(if abroad during junior year,
come talk to us - we'll help)

Current sophomores - class of 2026 - will STAY
with their existing (old) catalog

Box 3

I am a junior, majoring in Biology.



Box 4

I am NOT doing a Biology major but need BIOL 246 (Cell & Molec)

