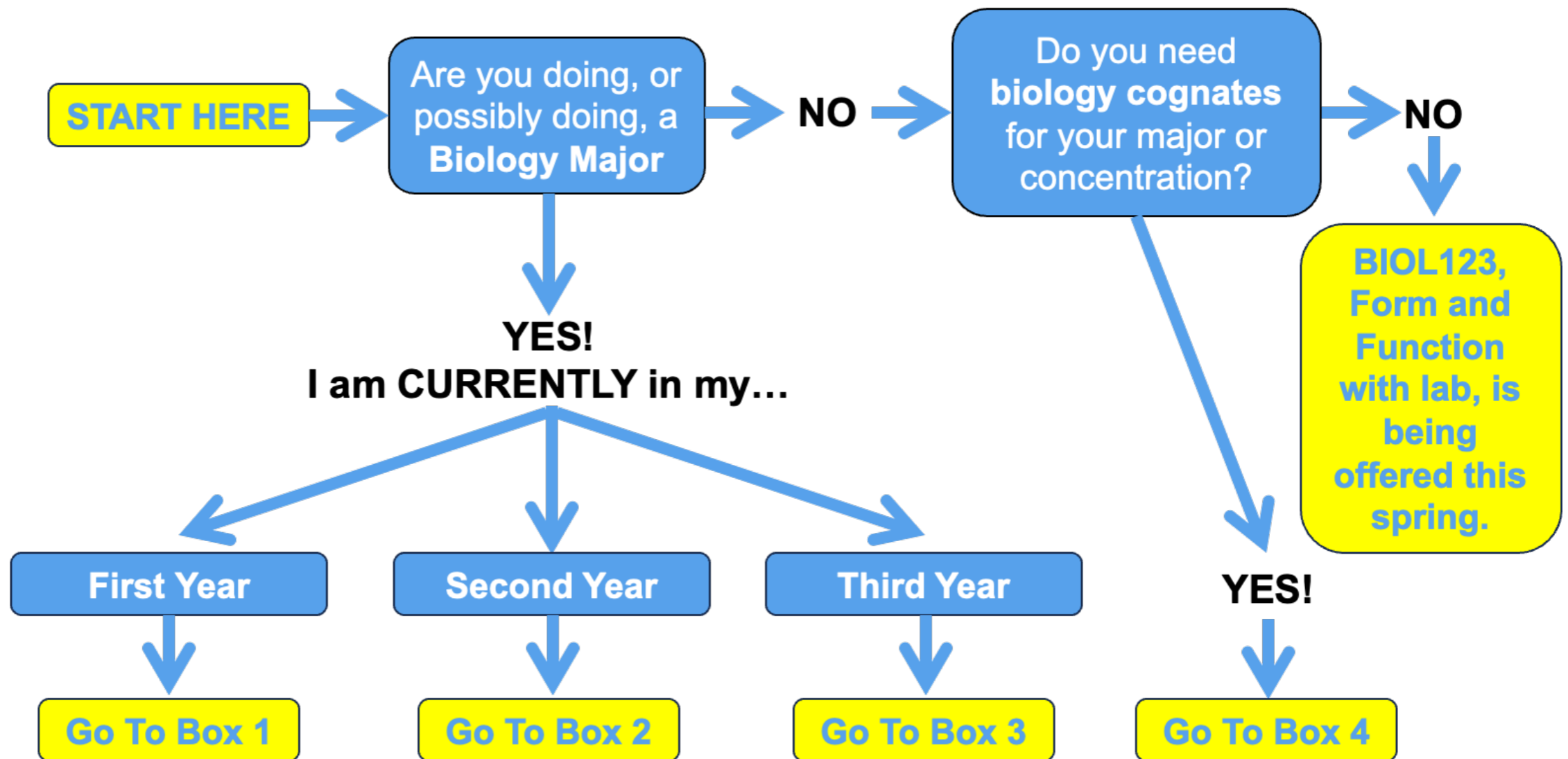


The Bio Dept. is remodeling its course offerings!

Please use this handout to chart your path forward



A few REALLY IMPORTANT notes...

Courses won't necessarily be offered in the same term(s) they have been offered in the past... that's why this document exists. Ignore the instructions here at your own risk !

BIOL224 (Ecology & Conservation) and BIOL246 (Cell & Molecular Biology) are both being offered this spring and again in the fall... they WILL NOT be offered in either winter or spring next year, so take them now !

The Bio Dept. supports study abroad for majors. The suggested courses shown here assume study abroad sometime in the junior year, and we are also committed to working with individual students who wish to study abroad at other times. Contact a Biology professor if you have questions.

Box 1

I am a first-year, possibly doing a Biology major.

By the end of winter 2024, I will have taken...

BIOL112

Ev Gen

take BIOL123 in spring '24, then either BIOL224 or BIOL246 in fall '24

BIOL123

F n F

take BIOL224 in spring '24 or fall '24, then BIOL201 in sophomore winter

BOTH

Ev Gen + F n F

take either BIOL224 or BIOL246 in spring '24; if both are full in spring, take one in fall '24

NEITHER

take BIOL123 in spring '24, BIOL224 in fall '24, and BIOL201 in sophomore winter

ALL first-years intending to be a Biology major should plan to take a BIOL 2XX elective in the spring of their sophomore year. There will be BIOL 2XX electives at three different times in spring 2025 to accommodate everyone's schedules, but this elective must be taken in spring term. Anyone wishing to study abroad in spring of their sophomore year should contact a Biology professor to work out an approved plan ahead of time.

Box 2

I am a sophomore, possibly doing a Biology major.

Below, find the column that matches the courses you will have completed by the end of winter 2024...

I will have taken...

| | | | | | | |
|----------------------|---|---|---|---|---|---|
| BIOL112 (Ev Gen) | X | X | X | X | X | |
| BIOL123 (F n F) | X | X | X | X | | X |
| BIOL224 (Eco Con) | X | | | X | | X |
| BIOL246 (Cell Molec) | | X | | X | X | |

see instructions for
group number ...



1



2



3



4



5



6

If you will have completed only one Biology course by the end of winter 2024, or if your combination of courses is not shown, please contact Biology professor Amanda Wollenberg - she will help you figure out a plan.

Box 2 (cont'd)

Instructions for ...

GROUP 1 112, 123, 224

take BIOL246 in
spring '24
(in the unlikely case
that it's full, take it
in fall)

GROUP 2 112, 123, 246

take BIOL224 in
spring '24
(in the unlikely case
that it's full, take it
in fall)

GROUP 3 112, 123

take either BIOL224 or
BIOL246 in spring '24;
take the other in fall
(if abroad in fall,
take a BIOL2XX
elective in jr. spring)

GROUP 4 112, 123, 224, 246

study abroad! take
cognates! explore!

GROUP 5 112, 246

take BIOL123 in spring
'24 (last chance!); take
BIOL224 in fall
(if abroad in fall, take
a BIOL2XX elective in
jr. spring)

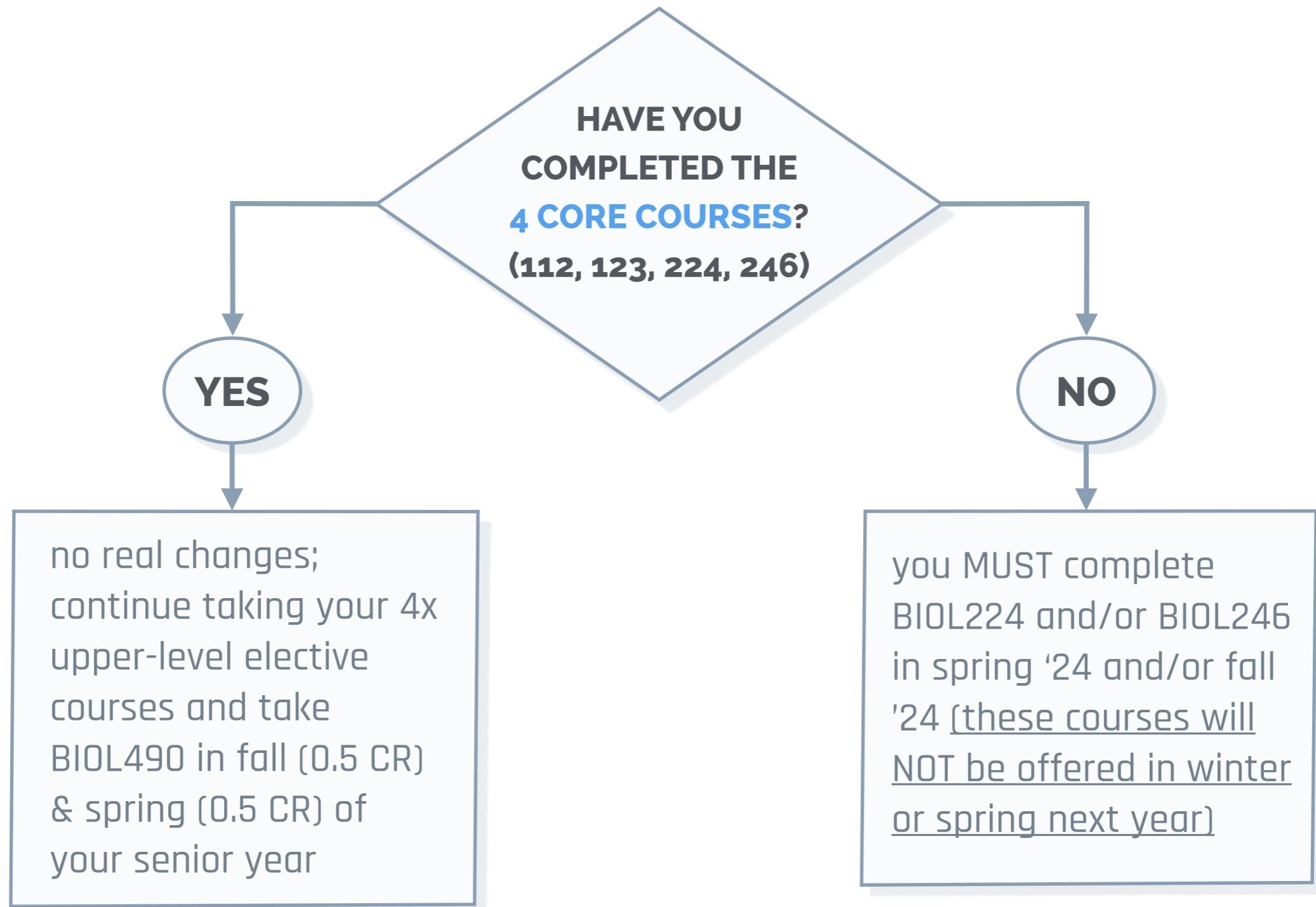
GROUP 6 123, 224

take BIOL201 in jr. winter (will
substitute for BIOL112); take a
BIOL2XX elective in jr. spring
(if abroad during junior year,
come talk to us - we'll help)

Note to advisors: current sophomores - class of
2026 - will STAY with their existing (old) catalog

Box 3

I am a junior, majoring in Biology.



Box 4

I am NOT doing a Biology major but need BIOL 246 (Cell Molec)

